



The **610 hose retriever** suspends the fueling hose above the dispenser eliminating kinks and tangles while keeping the hose up off the drive. The 360 degree smooth rotating retriever head assists the operator in positioning the hose to the fueling point. The hose retriever reduces safety hazards at the fueling point and eliminates hose wear.

A heavy duty steel base is available to simplify retrofit installations saving time and money. Two 10-pound counterweights connect via stainless steel cable making for low maintenance and trouble-free counter movement. Extra weights are available for larger diameter hoses.

### Materials of Construction

#### Hose retriever

Head... cast iron (E-coated black)

Cable and connectors... stainless steel

Pulley... aluminum

Ball bearing swivel... stainless steel

Installs on 2" schedule 80 pipe (installer supplied)

The **610 standard base** makes the anchoring process a 610 hose retriever easier by eliminating the need to break concrete. The **610 hinged base** allows the hose retriever to be tilted 90° to grade level for installation and service.

### Features and Details of hinged base

- Reduces installation time
- Inspection and service are easier and safer from grade level

### Materials of Construction

#### Hinged base

Steel, powder coated black

Set screws... stainless steel

Hinge... stainless steel

#### Standard base

Steel, powder coated black

#### Square base

Steel, powder coated black

Set screws... stainless steel



Fig. 610

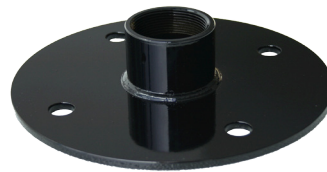


Fig. 610 Standard Base  
610B--0100 WAPB

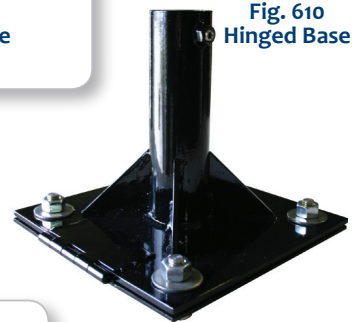


Fig. 610  
Hinged Base

610B--0200 AB



Fig. 610 Base  
610B--0300 AB

Hose Hanger, Hosebun™, and Item Numbers on next page...





The proper way to cradle a hose while suspended from a hose retriever is with a hose hanger or a Hosebun™.

### Application

The **611 hose hanger** supports the bend radius, protecting the hose from kinking. This product is easy to install and is the most economical choice!

### Features and Details

- Durable construction
- Economical
- Extends life of the hose

### Materials of Construction

#### 611

- Hose hanger... Cast aluminum, powder coated
- Hardware... Stainless steel
- Spacers... Nylon (1¼"-2" size)
- D-ring... Stainless steel
- Sling... UV resistant polyester
- Hose clamps with hose protectors... Stainless steel

### Application

The **610 hose hanger and Hosebun™** protects the bending radius, protecting the hose from kinking. This product is easy to install and has a 5-1 safety factor.

### Materials of Construction

#### Hose hanger and Hosebun™

Urethane

Sling... Nylon





## Model 610 Hose Retriever, Bases, Hose Hanger, & Hosebun™ (continued)

| Item Number     | Description  | Weight Kit | Hose Hanger/Hosebun | Base | Weight (lbs) |
|-----------------|--|------------|---------------------|------|--------------|
| 610---0000 AR   | Hose retriever assembly, less weights and cable  | N          | N                   | N    | 7.10         |
| 610---0100 AR*  | Hose retriever assembly  | Y          | N                   | N    | 27.0         |
| 610B--0000 AR*  | Hose retriever assembly with standard base   | Y          | N                   | Y    | 33.30        |
| Item Number     | Description  | Weight Kit | Hose Hanger         | Base | Weight (lbs) |
| 610HH-0100 AR*  | Hose retriever assembly, with 1" 611 aluminum hose hanger  | Y          | 1"                  | N    | 30.50        |
| 610HH-0150 AR*  | Hose retriever assembly, with 1¼" to 1½" 611 aluminum hose hanger  | Y          | 1¼-1½"              | N    | 31.50        |
| 610HH-0200 AR*  | Hose retriever assembly, with 2" 611 aluminum hose hanger  | Y          | 2"                  | N    | 32.50        |
| 610HHB0100 AR*  | Hose retriever with base, with 1" 611 aluminum hose hanger   | Y          | 1"                  | Y    | 36.80        |
| 610HHB0150 AR*  | Hose retriever with base, with 1¼" to 1½" 611 aluminum hose hanger                                       | Y          | 1¼-1½"              | Y    | 37.80        |
| 610HHB0200 AR*  | Hose retriever with base, with 2" 611 aluminum hose hanger   | Y          | 2"                  | Y    | 38.80        |
| 610HHBH0100 AR* | Hose retriever with hinged base and 1" 611 aluminum hose hanger  | Y          | 1"                  | Y    | 54.80        |
| 610HHBH0150 AR* | Hose retriever with hinged base and 1¼" to 1½" 611 aluminum hose hanger                                  | Y          | 1¼-1½"              | Y    | 55.80        |
| 610HHBH0200 AR* | Hose retriever with hinged base and 2" 611 aluminum hose hanger  | Y          | 2"                  | Y    | 56.80        |
| 611---0100 AH   | 1" 611 aluminum hose hanger with sling   | N          | 1"                  | N    | 3.0          |
| 611---0150 AH   | 1¼"-1½" 611 aluminum hose hanger with sling  | N          | 1¼-1½"              | N    | 3.75         |
| 611---0200 AH   | 2" 611 aluminum hose hanger with sling   | N          | 2"                  | N    | 4.0          |
| Item Number     | Description  | Weight Kit | Hosebun             | Base | Weight (lbs) |
| 610H--0100 AR*  | Hose retriever assembly, with ¾" or 1" urethane hose hanger  | Y          | ¾" or 1"            | N    | 30.50        |
| 610H--0125 AR*  | Hose retriever assembly, with 1¼" hosebun  | Y          | 1¼"                 | N    | 31.0         |
| 610H--0150 AR*  | Hose retriever assembly, with 1½" hosebun  | Y          | 1½"                 | N    | 31.50        |
| 610H--0200 AR*  | Hose retriever assembly, with 2" hosebun   | Y          | 2"                  | N    | 32.50        |
| 610H--0300 AR*  | Hose retriever assembly, with 3" hosebun   | Y          | 3"                  | N    | 33.0         |
| 610HB-0100 AR*  | Hose retriever assembly with standard base and ¾" or 1" 610 urethane hose hanger                         | Y          | ¾" or 1"            | Y    | 36.80        |
| 610HB-0125 AR*  | Hose retriever assembly with standard base and 1¼" hosebun   | Y          | 1¼"                 | Y    | 37.30        |
| 610HB-0150 AR*  | Hose retriever assembly with standard base and 1½" hosebun   | Y          | 1½"                 | Y    | 37.80        |
| 610HB-0200 AR*  | Hose retriever assembly with standard base and 2" hosebun  | Y          | 2"                  | Y    | 38.80        |
| 610HB-0300 AR*  | Hose retriever assembly with standard base and 3" hosebun  | Y          | 3"                  | Y    | 39.30        |
| 610HGR0100 AH   | 610 ¾" or 1" urethane hose hanger with sling   | N          | ¾-1"                | N    | 3.50         |
| 610BUN0125 1B   | Hosebun™, 1¼" (black)  | N          | 1¼"                 | N    | 3.25         |
| 610BUN0150 1B   | Hosebun™, 1½" (black)  | N          | 1½"                 | N    | 3.75         |
| 610BUN0200 1B   | Hosebun™, 2" (black)   | N          | 2"                  | N    | 4.0          |
| 610BUN0300 1B   | Hosebun™, 3" (black)   | N          | 3"                  | N    | 4.25         |
| Item Number     | Description  | Weight Kit | Hose Hanger/Hosebun | Base | Weight (lbs) |
| 610B--0100 WAPB | Standard base assembly, powder coated black  | N          | N                   | Y    | 5.30         |
| 610B--0200 AB   | Hinged base assembly, powder coated black  | N          | N                   | Y    | 24.0         |
| 610B--0300 AB   | 6x6 Square base assembly, powder coated black  | N          | N                   | Y    | 8.65         |
| 610---0103 AK*  | Single Weight Kit (includes one 10lb weight and cable)   | Y          | N                   | N    | 11.0         |
| 610---0203 AK*  | Two Weight Kit (includes two 10lb weights and cable)   | Y          | N                   | N    | 21.0         |
| 610---0123 AK   | Anchor bolt kit, stainless steel, (four ⅝" bolts, nuts, and fender washers) for standard and hinged base |            |                     |      |              |
| 610B--0303 AK   | Anchor bolt kit, stainless steel, (four ½" bolts, nuts, and fender washers) for 6x6 square base          |            |                     |      |              |

\*Includes weight kit.



MORRISON BROS. CO.

570 E. 7th Street, P.O. Box 238 | Dubuque, IA 52004-0238

t. 563.583.5701 | 800.553.4840 | f. 563.583.5028

www.morbros.com